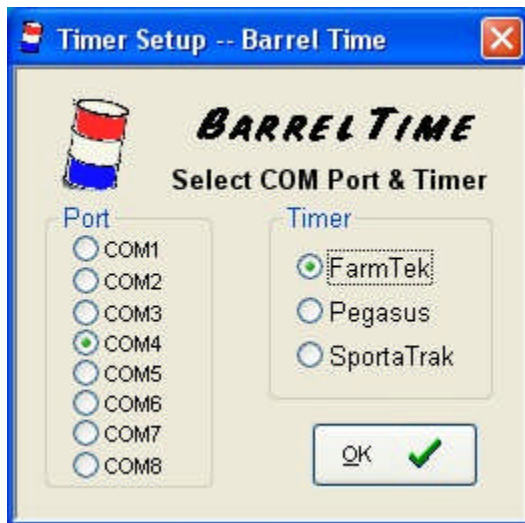
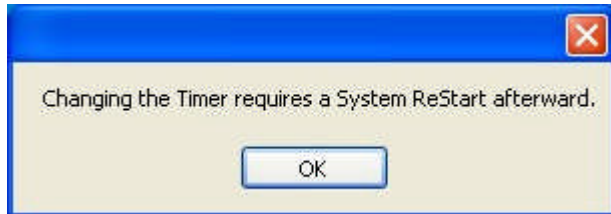


Electric Eye Setup and Testing

 **Be sure to Test your timer each time you use it!**

To **Set Up** your Electric Eye, first go to **Utilities | Set Up Defaults | Electronic Timer Set Up** from the Main Menu.

You will be advised that a restart of **BarrelTime** is needed after changing the Timer Default, then go to the Timer Setup window.

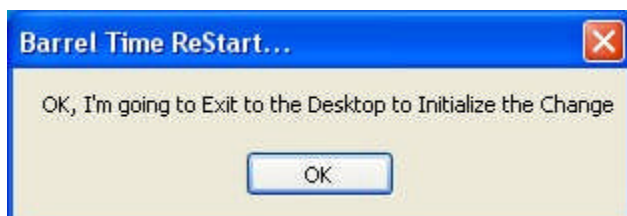


Select the Timer you are using and set COM port. If you don't know which COM port to select, start with COM3.

Back in the DOS days, your choice was COM1 or COM2. Today's computers with multiple USB ports and other I/O ports more typically use COM3 to COM5, or even higher. But -- each computer is different.

What can make it even more confusing, is that **the COM port may change** from time to time **on the same computer** depending on whether or not additional USB devices are plugged in.

 **Be sure to Test your timer each time you use it!**



When you click on OK, you will be returned to the desktop. Restart **Barrel Time**. The timer you selected will be

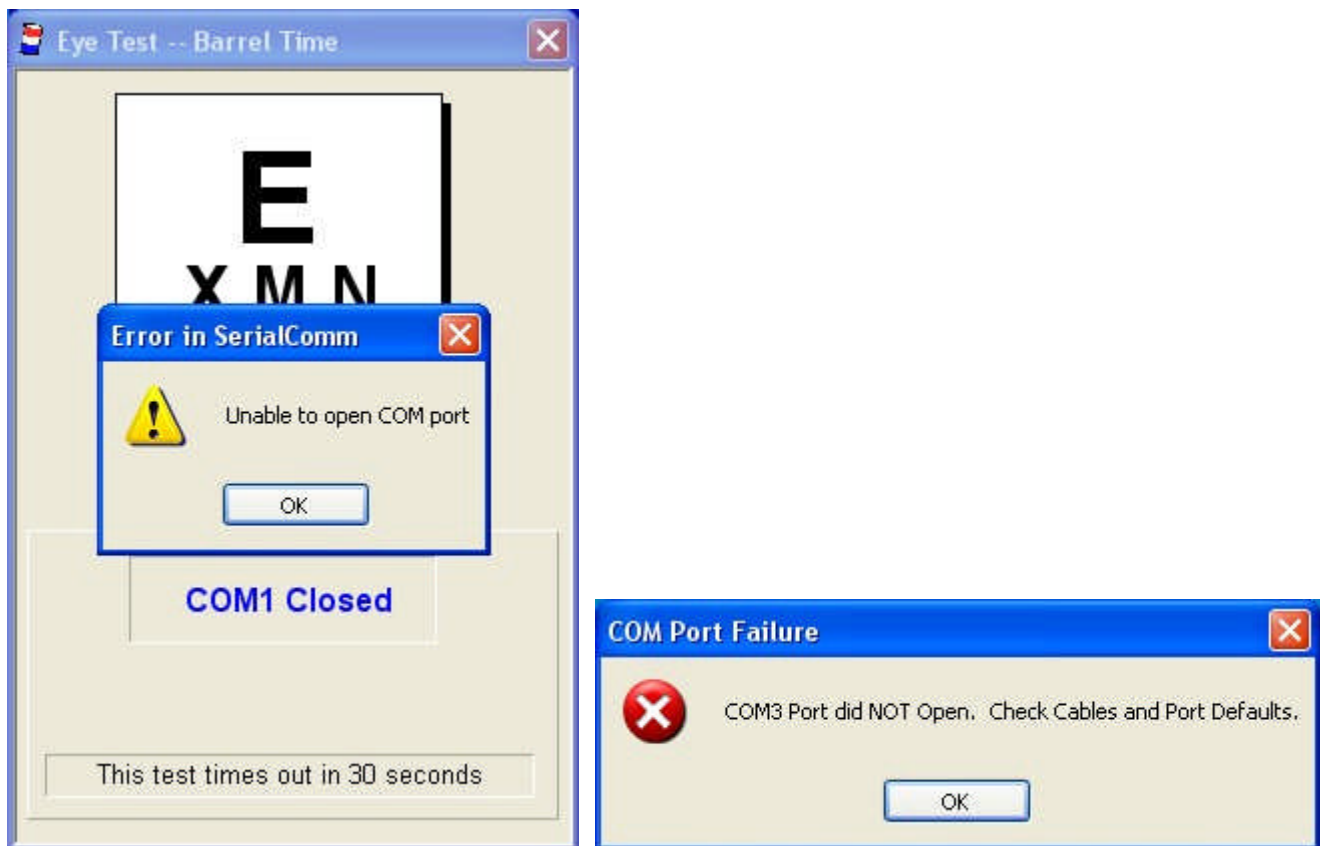
your default timer unless/until you change it.

Utilities | Set Up Defaults | Electronic Timer Set Up

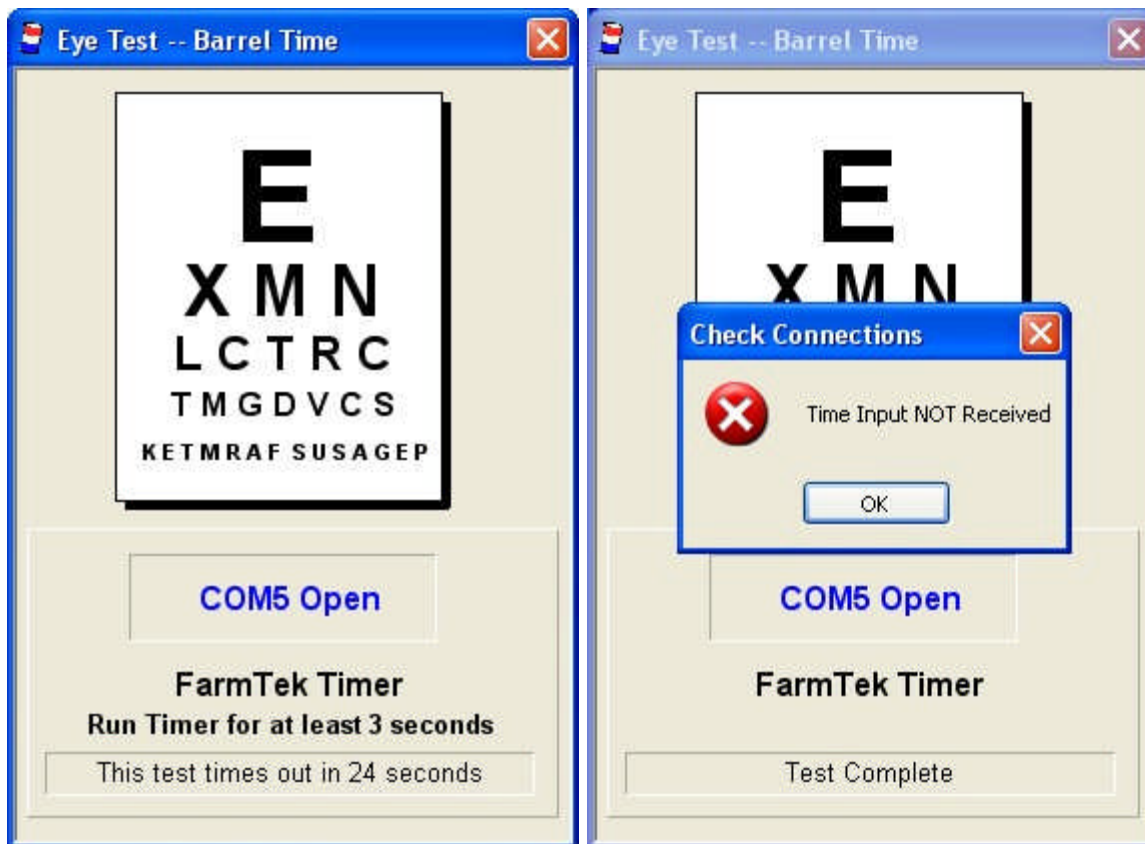
Electric Eye Testing

To **Test** or **Troubleshoot** your Electric Eye, go to **Timer | Eye Test - Pre-Race Check** from the Main Menu. It is recommended that you **test the timer prior to each race** to assure that it is working correctly. The Eye Test waits for an input from your timer. If not is received, the window times out and closes in 30 seconds. Run your timer for at least three seconds to check that it is working properly.

Note: It is not necessary to hook up the electric eyes on the **FarmTek** or **Pegasus** timers to test the output. However, a pre-race check with the eyes attached is a good idea.

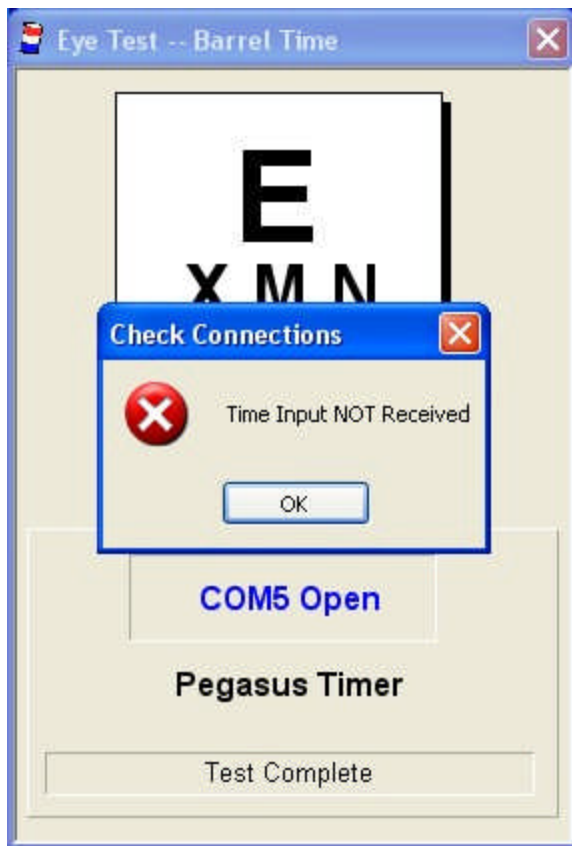


Eye Test was unable to find a working COM port.. (I got this message when I tried to use a bad cable.)

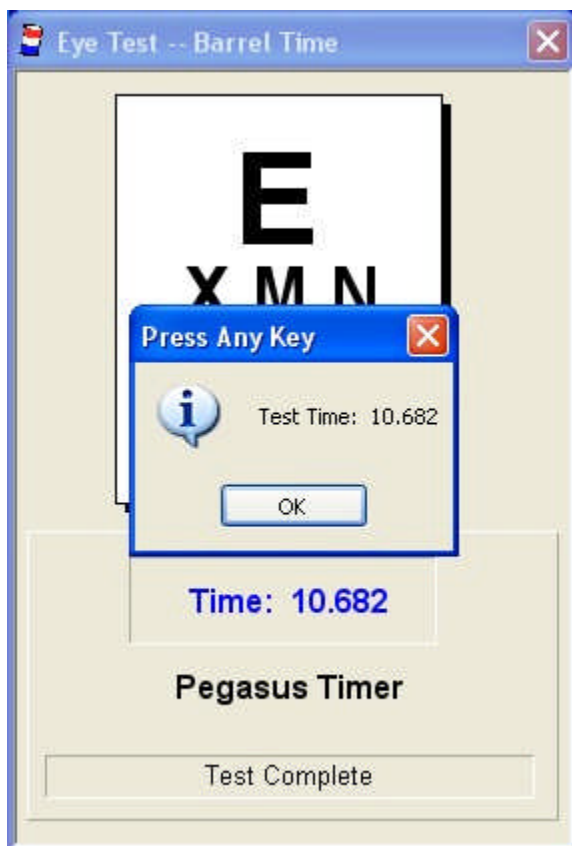


The **Eye Test** is waiting for an input signal.... This time the COM Port is working, but no signal was received from the timing device. Could be a bad cable or connection or the the wrong timer .

Note that the this test confirms that the COM Port is Open. If it is NOT Open, recheck your Timer Setup. Occasionally, you may have to reboot (turn off/on) the computer to set/reset the COM Port.



It's been changed to the correct timing device, COM5 is open -- but it's still not working! Connection or COM Port?



Successful **Eye Test** on **COM6!**

 **Be sure to Test your timer each time you use it!**

If something goes wrong....

If the COM Port Opens, but the Eye Test times out, check your cable connections. Also, be sure you have selected the right Electric Eye as your default. (Each manufacturer's timer sends a different flavor signal.) Finally, check to see if there is more than one COM port available. Your timer may not be on the first open COM Port.

Note: The timer does not sent a clock-start signal to the computer -- only a time signal when the clock stops. For this reason it is not possible to show "live time" on the computer screen.

Q. How do I Plug my Computer into my Timer?

A. Check the **BarrelTime** FAQ's (Frequently Asked Questions) for this. Timers and their Computer connections seem to change quicker than **BarrelTime** updates. The Information can be updated more quickly there.
www.barreltime.com

Q. I'm using a **FarmTek Timer with a display** (scoreboard). How do I plug in my computer also?

A. Go to *Radio Shack* and pick up or order a **#42-2570** "Stereo Headphone Y Adapter." Plug the adapter into the timer, and both the computer and the display into the "Y" adapter.
(Hint: Don't tell the *salesman you are using this for a computer -- he'll try to sell you something that doesn't work.)

*I'm not being sexist, Ladies - you know what I mean!

Timer | Eye Test - Pre-Race Check